

ASSEMBLY INSTRUCTIONS



MODEL WDC2019 18-Person 3 Room Cabin Tent 21' x 14'

SAFETY WARNING - DOs AND DO NOTs

EVERYONE WHO USES THIS TENT SHOULD READ THIS MANUAL AND BECOME FAMILIAR WITH ALL SAFETY WARNINGS AND PRECAUTIONS FOR SAFE USE, ASSEMBLY, CARE, MAINTENANCE, AND STORAGE. KEEP THIS MANUAL SO YOU CAN REFER TO IT LATER.

⚠️ DANGER CARBON MONOXIDE GAS WILL KILL YOU

Stoves, heaters, grills, lantern, candles, and other fuel-burning devices that burn propane, natural gas, charcoal, kerosene, coal, or other fuels produce a toxic gas called carbon monoxide. Because carbon monoxide gas is invisible, odorless, and colorless, a dangerous level of carbon monoxide gas can accumulate in a tent which cannot be detected by sight, smell, or taste. For these reasons:

- DO NOT use matches, lighters, stoves, heaters, grills, lanterns, candles, cooking equipment, or other fuel-burning devices inside or near a tent.
- DO NOT build fires inside or near a tent.
- DO NOT leave campfires unattended.

Your failure to follow this warning will cause death, serious injury, or permanent disability to you or others.

⚠️ DANGER PROTECT YOUR CHILDREN

- DO NOT leave children unattended inside a tent or in camp.
- DO NOT allow children to assemble a tent.
- DO NOT allow children to enter or exit a tent except through the door.
- DO NOT allow children to remain in a closed-up tent on hot days.

Your failure to follow this warning will cause death, serious injury, or permanent disability to your children.

⚠️ WARNING FLAMMABILITY WARNING KEEP ALL FLAME AND HEAT SOURCES AWAY FROM THIS TENT FABRIC

This tent is made with flame resistant fabric which meets CPAI-84 specification. IT IS NOT FIREPROOF. The fabric will burn if left in continuous contact with any flame source. The application of any foreign substance to the tent fabric may render the flame-resistant properties ineffective.

Your failure to follow this warning will cause death, serious injury, or permanent disability to you or others.

CAMPING DO'S AND DON'TS

DO NOT...

1. Do not pitch tent near open fire.
2. Do not leave campfire unattended.
3. Do not leave children unattended inside a tent.
4. Do not use heating, lighting or cooking equipment with open flames in or near tents.
5. Do not use other than recommended water repellent compounds on your tent.
6. Do not spray the tent with insecticide.
7. Do not store tent on concrete floor.

DO...

1. Always extinguish campfire before leaving area.
2. Exercise care when using electricity and lighting in and near tents.
3. Make certain your tent is properly ventilated in all weather conditions. In extreme weather conditions, snow could obstruct airflow and cause asphyxiation unless cleared frequently.
4. Anchor your tent securely to provide additional security from changing climatic conditions. Snow pegs, skis and/or heavy rocks may be necessary to supplement tent stakes and guy cords.
5. Take your tent down and store properly after camping.

CARE

DO NOT LEAVE YOUR TENT SET UP IN DIRECT SUNLIGHT LONGER THAN NECESSARY. THE SUN'S ULTRAVIOLET (UV) LIGHT DEGRADES ALMOST EVERY FABRIC AND MATERIAL. IF LEFT IN SUNLIGHT FOR PROLONGED PERIODS OF TIME, FABRIC WILL FADE AND WEAKEN. DO NOT STORE TENT ON CONCRETE FLOOR. DO NOT SPRAY THE TENT WITH INSECTICIDE.

Your tent is water repellent, however, it is not waterproof. During heavy rain, some leakage may occur. Keep objects from touching the inside of the tent. Such objects may cause leakage at point of contact. If seam leakage occurs, it can be controlled by applying a seam sealer compound.

EXERCISE CARE WHEN USING ELECTRIC DEVICES IN AND NEAR TENTS.

Although our tents and screen houses are constructed to rigid specifications, periods of wind or rain soaking the ground may loosen the stakes and cause the uprights to sink into the ground. This will weaken the rigidity of the overall structure. Water pockets may also form in the roof if the unit is not assembled taut, possibly causing broken frames and torn fabric.

REPLACEMENT PARTS

If you have questions or need to order a part, call 1-800-325-4121 or send an email to contactus@wenzelco.com. Have your model number or part number ready when you call. **DO NOT ORDER BY REFERENCE KEY NUMBER.**

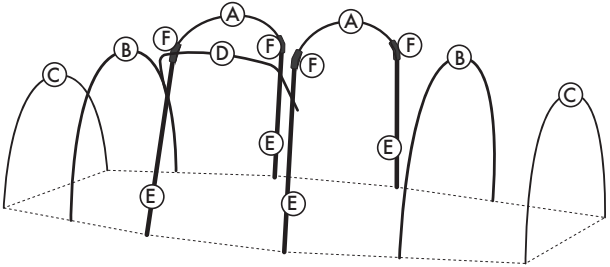
Send your request for parts to:

Exxel Outdoors, LLC.

1 International Ct.

Broomfield, CO 80021

| KEY NO. | WDC2019 18-Person 3 Room Cabin Tent | | QTY REQ |
|---------|-------------------------------------|-----------|---------|
| | DESCRIPTION | PART NO. | |
| A | Main Roof Pole | WDC2019MR | 2 |
| B | Side Room Pole | WDC2019SR | 2 |
| C | Side Room Awning Pole | WDC2019SA | 2 |
| D | Awning Hoop Pole | WDC2019AH | 1 |
| E | Upright Pole | WDC2019U | 4 |
| F | Main Corner Joint | WDC2019CJ | 4 |
| | Complete Frame | WDC2019ST | 1 |
| | Guy Rope | A1001 | 12 |
| | Steel Stake | PINSTAKE | 26 |



ASSEMBLY INSTRUCTIONS



OZARK TRAIL®
OUTDOOR EQUIPMENT

MODEL WDC2019 18-Person 3 Room Cabin Tent 21' x 14'

IMPORTANT: WE ADVISE YOU TO ASSEMBLE THE TENT ONCE BEFORE GOING CAMPING TO BECOME FAMILIAR WITH THE ASSEMBLY OF THE TENT.

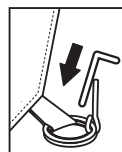
NOTE: PLEASE LOOK AT THE REPLACEMENT PARTS DIAGRAM TO SEE HOW YOUR FRAME IS ASSEMBLED.

TO PROLONG THE LIFE OF THE TENT FLOOR, SELECT A LEVEL, CLEAN AREA FOR THE CAMPSITE. TO PREVENT DAMAGE TO THE ZIPPER, UNZIP THE DOORS TO ALLOW AIR TO ENTER THE TENT.

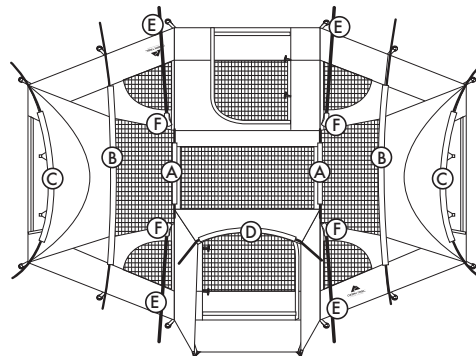
TO IMPROVE THE WEATHER RESISTANCE OF YOUR TENT, IT IS ADVISABLE TO USE SEAM SEALER TO COAT ALL EXPOSED SEAMS. YOU SHOULD APPLY ONLY TO THE INSIDE SEAMS OF THE TENT AND UNDERSIDE OF THE TENT FLY. IF APPLIED TO THE OUTSIDE SEAMS, DISCOLORATION OF YOUR TENT MAY OCCUR. SEAM SEALER IS AVAILABLE IN THE CAMPING SECTION OF ANY LOCAL SPORTING GOODS STORE.

STEP 1: Spread tent out flat, floor side down. Unzip the doors.

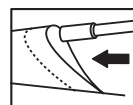
STEP 2: Stake the tent to the ground by inserting tent stakes through the steel rings at the base of the tent. Hammer stakes into the ground at a 45° angle to the tent, making sure the tent floor is pulled out even and tight.



STEP 3: Extend the fiberglass poles by pulling out each section and placing pole ends into the metal ferrule connectors. There will be seven fiberglass poles. The green poles(A) are the main roof poles. The tan poles(B) will be used for the side rooms of the tent. The two orange poles(C) are for the side door awnings. The single black pole will be used for the front awning (D).



STEP 4: Insert the two green poles (A) into the green pole sleeves at the top of the tent roof. Position poles so that equal pole lengths extend from each end of the pole sleeves.

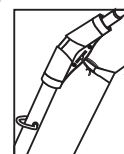


STEP 5: Attach the plastic corner joints (F) to the ends of each green pole. The smaller opening of the corner joints with "teeth" fit over the ends of the fiberglass poles.

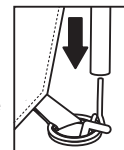


STEP 6: Locate and extend the four steel poles (E), by pulling out each wire-corded section and placing the jointed ends into the connected pole sections.

STEP 7: With an adult at each side of the front door, insert the ends of the steel upright poles into the bottom opening of the plastic corner joints. Make sure the metal "D" ring is located at the top section of the pole.



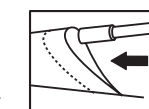
STEP 8: Each adult should lift up on the steel pole and while raising one side of tent, place the bottom of the steel pole onto the metal pins located on the rings at the base of the tent. Repeat steps 7 and 8 at the back of the tent with the two remaining steel poles.



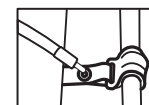
STEP 9: Clip the plastic hooks on the tent walls around the steel poles.



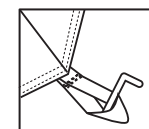
STEP 10: To assemble the side rooms, locate the tan fiberglass poles (B). Insert the pole through the corresponding tan pole sleeve at the top of the side room. With an adult on each end of the side room pole, gently flex the pole into an arch and place the ends onto the pins on the rings at the base of the tent. Repeat the same procedure for the remaining side room.



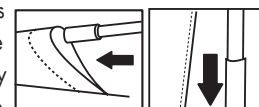
STEP 11: Insert the black front awning pole (D) into the tan sleeve on the awning located above the front door. Flex the fiberglass fly pole and insert each end into the metal grommets located on either side of the front door.



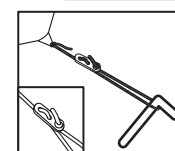
STEP 12: Stake down the front of the awning by inserting the stakes through the stake loops and hammering the stakes into the ground at a 45° angle.



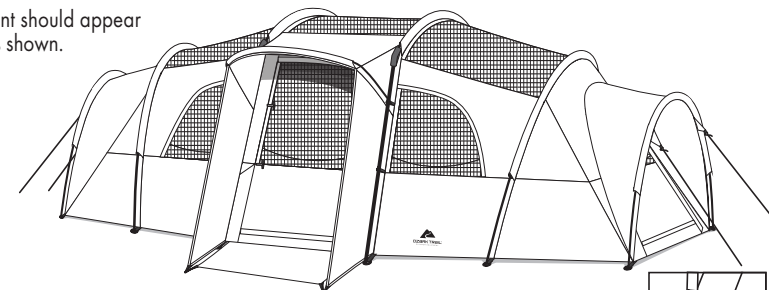
STEP 13: Insert one of the orange side door awning poles (C) into the orange sleeve located on the awning at the side door. With an adult on each end of the awning pole, gently flex the pole into an arch and place the ends of the pole onto the pins on the rings at the base of the tent. Repeat this same procedure for the remaining side room.



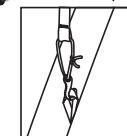
STEP 14: Guy ropes are needed to hold the side awnings in place. Extend each of the guy ropes that are attached to the side awnings. Make a loop at the opposite end of the guy rope, by using slider as shown and place loop over a tent stake. Adjust slider to make the guy rope tight and stake to the ground.



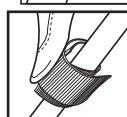
Tent should appear as shown.



STEP 15: Unfold fly and place over tent. Attach the hooks on the fly corners to the metal rings on the main upright poles and the fabric loops on the side room pole sleeves.

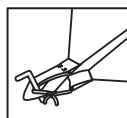


STEP 16: Secure the fly to the tent by wrapping the Velcro fasteners on the fly around the tent poles as well as securing the ties on the underside of the fly to the corner joints.

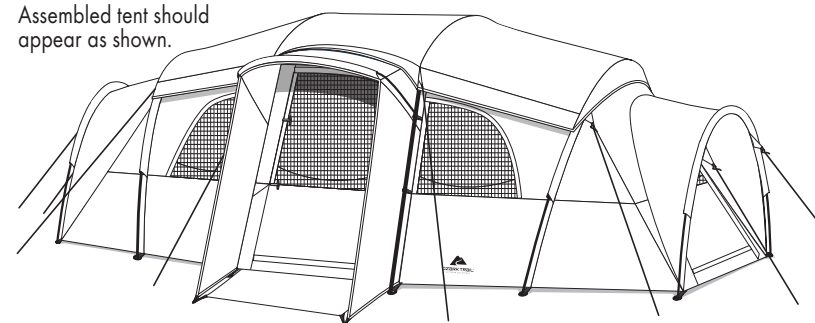


STEP 17: Guy ropes have been provided for the fly. Extend each of the guy ropes and stake to the ground.

STEP 18: There is a mud mat attached to the front of the tent to help keep your tent floor clean. Insert the stakes through the webbing loops at the front corners of the mud mat and front awning stake to the ground.



Assembled tent should appear as shown.



NOTE: To take down tent, follow steps above in the reverse order. Be sure to leave doors and windows unzipped. **Make sure tent is clean and dry before storing.** Place stakes into stake bag and poles into pole bag, which are provided. The tent should be folded into equal parts toward the center of the tent to distribute the bulk. Fold fly and lay on top of tent. Start a small tight roll, the width of your carry bag, at the end opposite the doors. Roll tent around the pole bag toward doors to allow air to escape. Once rolled, tie a string around tent to hold in place. Place tent and stake bag into carry bag.